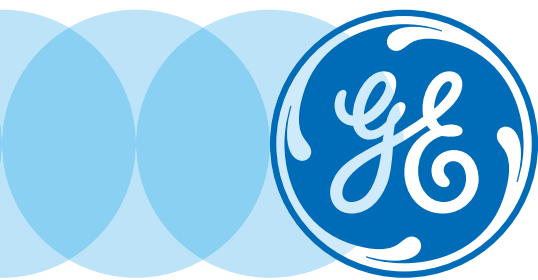
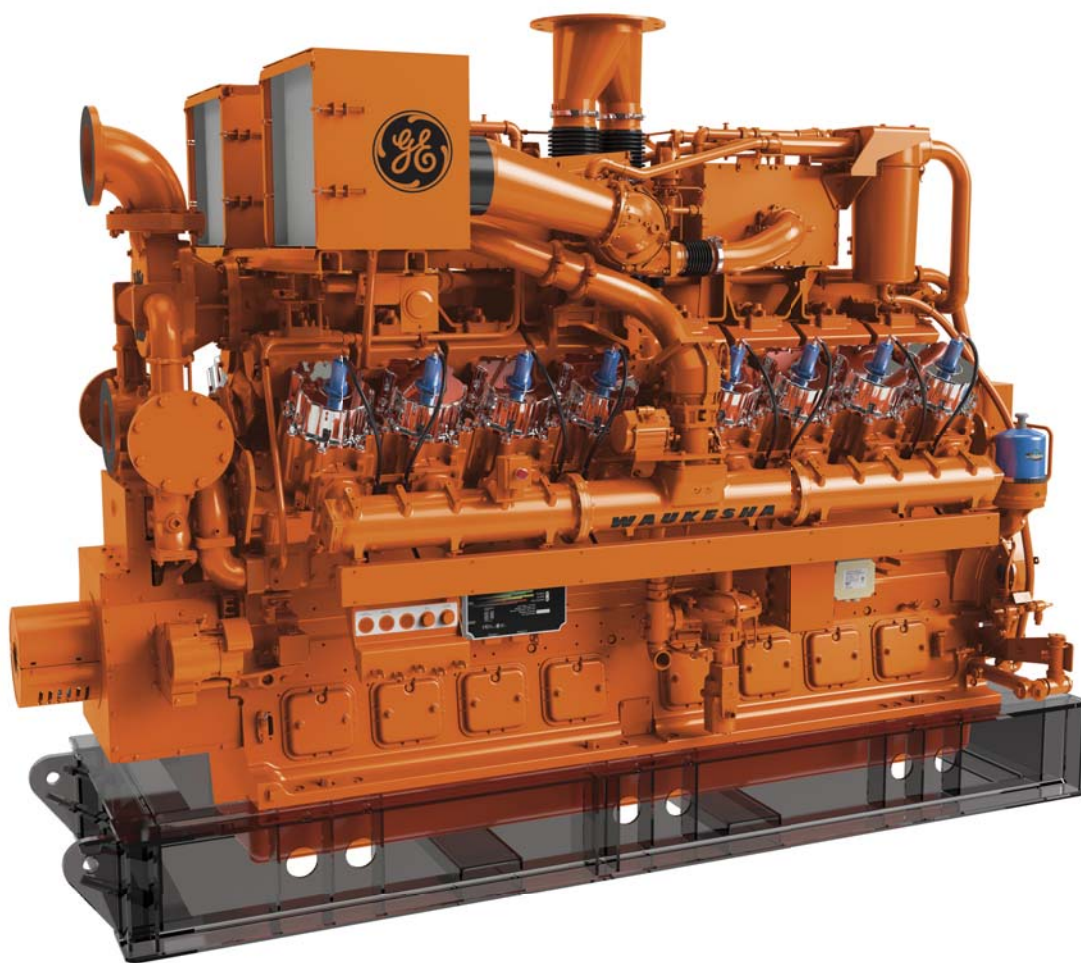


GE Power

Waukesha* gas engines

Power Ratings



Gas Compression & Mechanical Drives

Natural Gas Fueled Engines Continuous Duty

275GL*+				750 rpm	800 rpm	900 rpm	1000 rpm
Model	Disp.	Bore & Stroke	C.R.	bhp kWb	bhp kWb	bhp kWb	bhp kWb
16V 275GL+	17,398 in ³ (285 L)	10.83 x 11.81" (275 x 300 mm)	9:1	3750 ⁶ 2796 ⁶	4000 ⁶ 2983 ⁶	4500 ⁶ 3356 ⁶	5000 ⁶ 3729 ⁶
				3625 ⁵ 2703 ⁵	3870 ⁵ 2886 ⁵	4350 ⁵ 3244 ⁵	4835 ⁵ 3605 ⁵
12V 275GL+	13,048 in ³ (213.9 L)	10.83 x 11.81" (275 x 300 mm)	9:1	2812 ⁶ 2097 ⁶	3000 ⁶ 2237 ⁶	3375 ⁶ 2517 ⁶	3750 ⁶ 2796 ⁶
				2720 ⁵ 2028 ⁵	2900 ⁵ 2163 ⁵	3265 ⁵ 2435 ⁵	3625 ⁵ 2703 ⁵

VHP*				800 rpm	900 rpm	1000 rpm	1200 rpm
Model	Disp.	Bore & Stroke	C.R.	bhp kWb	bhp kWb	bhp kWb	bhp kWb
P9394GSI	9388 in ³ (153.9 L)	9.375 x 8.5" (238 x 216 mm)	9.7:1	— —	1688 1259	1875 1398	2250 1678
P9390GSI			8:1	1320 ² 984 ²	1485 ² 1107 ²	1650 ² 1230 ²	1980 ² 1476 ²
P9390GL			10.5:1	1320 ² 984 ²	1485 ² 1107 ²	1650 ² 1230 ²	1980 ² 1476 ²
L7044GSI	7040 in ³ (115.4 L)	9.375 x 8.5" (238 x 216 mm)	8:1	1120 ¹ 835 ¹	1260 ¹ 940 ¹	1400 ¹ 1044 ¹	1680 ¹ 1253 ¹
L7042GSI S4			8:1	987 ¹ 736 ¹	1110 ¹ 828 ¹	1233 ¹ 920 ¹	1480 ¹ 1104 ¹
L7042GL			10.5:1	987 ² 736 ²	1110 ² 830 ²	1233 ² 920 ²	1480 ² 1104 ²
L7044G			8:1	— —	690 515	767 572	920 686
L5794GSI	5788 in ³ (94.9 L)	8.5 x 8.5" (216 x 216 mm)	8.2:1	920 ¹ 686 ¹	1035 ¹ 772 ¹	1150 ¹ 858 ¹	1380 ¹ 1029 ¹
L5794LT			10.2:1	614 ⁵ 458 ⁵	1005 ⁵ 749 ⁵	1208 ¹ 901 ¹	1450 ¹ 1081 ¹
L5774LT			10.2:1	614 ⁵ 458 ⁵	934 ⁵ 696 ⁵	1067 795	1280 954
F3524GSI	3520 in ³ (57.7 L)	9.375 x 8.5" (238 x 216 mm)	8:1	560 ¹ 418 ¹	630 ¹ 470 ¹	700 ¹ 522 ¹	840 ¹ 626 ¹
F3514GSI			8:1	493 ¹ 368 ¹	555 ¹ 414 ¹	617 ¹ 460 ¹	740 ¹ 552 ¹
F3524G			8:1	— —	345 257	383 286	460 343

VGf*				1200 rpm	1400 rpm	1500 rpm	1600 rpm	1800 rpm
Model	Disp.	Bore & Stroke	C.R.	bhp kWb	bhp kWb	bhp kWb	bhp kWb	bhp kWb
P48GSI/GSID	2924 in ³ (48 L)	5.98 x 6.5" (152 x 165 mm)	8.6:1	— —	830 620	885 660	945 705	1065 800
P48GL/GLD			11:1	710 ⁴ 530 ⁴	830 ⁴ 620 ⁴	885 ⁴ 660 ⁴	945 ⁴ 705 ⁴	1065 ⁴ 800 ⁴
P48GSL/GLD			11:1	— —	910 ³ 680 ³	975 ³ 730 ³	1040 ³ 775 ³	1175 ³ 880 ³
L36GSI/GSID	2193 in ³ (36 L)	5.98 x 6.5" (152 x 165 mm)	8.6:1	— —	620 460	670 500	710 530	800 600
L36GL/GLD			11:1	— —	620 460	670 500	710 530	800 600
L36GL			8.7:1	— —	620 460	670 500	710 530	800 600
L36GL/GLD			11:1	— —	685 ³ 510 ³	735 ³ 550 ³	780 ³ 580 ³	880 ³ 660 ³
H24GSI/GSID	1462 in ³ (24 L)	5.98 x 6.5" (152 x 165 mm)	8.6:1	— —	415 310	445 330	475 355	530 400
H24GL/GLD			11:1	355 ⁴ 265 ⁴	415 ⁴ 310 ⁴	445 ⁴ 330 ⁴	475 ⁴ 355 ⁴	530 ⁴ 400 ⁴
H24GL			8.7:1	— —	415 310	445 330	475 355	530 400
H24GL/GLD			11:1	— —	455 ³ 340 ³	490 ³ 365 ³	520 ³ 390 ³	585 ³ 440 ³
H24G			11:1	215 160	250 186	265 198	285 213	320 239
F18GSI/GSID	1096 in ³ (18 L)	5.98 x 6.5" (152 x 165 mm)	8.6:1	— —	310 230	335 250	355 265	400 300
F18GL/GLD			11:1	— —	310 230	335 250	355 265	400 300
F18GL			8.7:1	— —	310 230	335 250	355 265	400 300
F18GL/GLD			11:1	— —	340 ³ 255 ³	365 ³ 275 ³	390 ³ 290 ³	440 ³ 330 ³
F18G			11:1	160 119	185 138	200 149	215 160	240 179

- 1) Engine available with Low Fuel Pressure System (LFPS) with the same ratings. Refer to Technical Data for LFPS ambient and altitude adjustments.
- 2) Engine ratings are 700-1000 rpm for low speed turbocharger operation and 1000-1200 rpm for high speed turbocharger operation.
- 3) These power ratings require pricebook option Code 1100 (176 BMEP). They are available continuously when applied per WK1* Power and Timing Curve S7079-19. It is permissible to operate at up to 5% overload for two hours in each 24 hour period.
- 4) Inline engine ratings are 1200 - 1400 rpm for low speed turbocharger operation and 1400 - 1800 rpm for high speed turbocharger operation. Vee engine ratings are 1100 - 1600 rpm for low speed turbocharger operation and 1400 - 1800 rpm for high speed turbocharger operation.
- 5) No overload allowed
- 6) Requires corresponding 1080 option code, no overload allowed

Notes:
• All ratings are at an intercooler water temperature of 130°F (54.4°C).

ISO Standard Power (Continuous Power Rating): The highest load and speed which can be applied 24 hours per day, seven days per week, 365 days per year except for normal maintenance. It is permissible to operate the engine at up to 10% overload for two hours in every 24 hour period.

Mechanical Drives

Natural Gas Fueled Engines Intermittent Duty

VHP*				800 rpm	900 rpm	1000 rpm	1200 rpm
Model	Disp.	Bore & Stroke	C.R.	bhp kWb	bhp kWb	bhp kWb	bhp kWb
P9390GSI	9388 in ³	9.375 x 8.5"	8:1	1631 1216	1835 1368	2039 1520	2447 1825
P9390GL	(153.9)	(238 x 216 mm)	10.5:1	1445 ² 1078 ²	1626 ² 1213 ²	1806 ² 1347 ²	2167 ² 1616 ²
L7042GL	7040 in ³ (115.4 L)	9.375 x 8.5" (238 x 216 mm)	10.5:1	1084 ² 808 ²	1219 ² 909 ²	1355 ² 1010 ²	1626 ² 1213 ²
L5794LT	5788 in ³ (94.9 L)	8.5 x 8.5" (216 x 216 mm)	10.2:1	— —	— —	1315 ¹ 981 ¹	1580 ¹ 1178 ¹

VGf*				1200 rpm	1400 rpm	1500 rpm	1600 rpm	1800 rpm
Model	Disp.	Bore & Stroke	C.R.	bhp kWb	bhp kWb	bhp kWb	bhp kWb	bhp kWb
P48GSI/GSID	2924 in ³	5.98 x 6.5"	8.6:1	— —	910 680	975 730	1040 775	1175 880
P48GL/GLD	(48 L)	(152 x 165 mm)	11:1	785 ⁴ 585 ⁴	910 ⁴ 680 ⁴	975 ⁴ 730 ⁴	1040 ⁴ 775 ⁴	1175 ⁴ 880 ⁴
L36GSI/GSID	2193 in ³	5.98 x 6.5"	8.6:1	— —	685 510	735 550	780 580	880 660
L36GL/GLD	(36 L)	(152 x 165 mm)	11:1	— —	685 510	735 550	780 580	880 660
L36GL			8.7:1	— —	685 510	735 550	780 580	880 660
H24GSI/GSID			8.6:1	— —	455 340	490 365	520 390	585 440
H24GL/GLD	1462 in ³	5.98 x 6.5"	11:1	395 ⁴ 290 ⁴	455 ⁴ 340 ⁴	490 ⁴ 365 ⁴	520 ⁴ 390 ⁴	585 ⁴ 440 ⁴
H24GL	(24 L)	(152 x 165 mm)	8.7:1	— —	455 340	490 365	520 390	585 440
H24G			11:1	240 180	275 205	295 220	315 235	355 265
F18GSI/GSID			8.6:1	— —	340 255	365 275	390 290	440 330
F18GL/GLD	1096 in ³	5.98 x 6.5"	11:1	— —	340 255	365 275	390 290	440 330
F18GL	(18 L)	(152 x 165 mm)	8.7:1	— —	340 255	365 275	390 290	440 330
F18G			11:1	180 130	205 155	220 165	240 180	265 195

1) Engine available with Low Fuel Pressure System (LFPS) with the same ratings. Refer to Technical Data for LFPS ambient and altitude adjustments.

2) Engine ratings are 700-1000 rpm for low speed turbocharger operation and 1000-1200 rpm for high speed turbocharger operation.

4) Inline engine ratings are 1200 - 1400 rpm for low speed turbocharger operation and 1400 - 1800 rpm for high speed turbocharger operation. Vee engine ratings are 1100 - 1600 rpm for low speed turbocharger operation and 1400 - 1800 rpm for high speed turbocharger operation.

Power Units

Mounted Radiator

VGf*				1400 rpm	1500 rpm	1600 rpm	1800 rpm
Model	Disp.	Bore & Stroke		bhp kWb	bhp kWb	bhp kWb	bhp kWb
Continuous Duty							
H24	2924 in ³ (48 L)	5.98 x 6.5" (152 x 165 mm)		401 299	428 319	454 339	505 377
F18	1096 in ³ (18 L)	5.98 x 6.5" (152 x 165 mm)		300 224	320 239	340 254	379 283
Intermittent Duty							
H24	2924 in ³ (48 L)	5.98 x 6.5" (152 x 165 mm)		443 330	472 352	502 374	560 418
F18	1096 in ³ (18 L)	5.98 x 6.5" (152 x 165 mm)		330 246	353 263	376 280	418 312

Notes:

- Power Units include engine and radiator mounted to a common skid with a suction fan.
- Ratings include deduct for radiator fan power.
- Power Units are available in GLU, GLDU, and GSIDU models, refer to the pricebook for more information.

Intermittent Power Rating: The highest load and speed that can be applied in variable speed mechanical system applications only. Operation at this rating is limited to a maximum of 3500 hours per year. All ratings are at an intercooler water temperature of 130°F (54.4°C).

Power Generation

Natural Gas Fueled Engine & Enginotor*

	Remote Radiator Cooling (kWe)				Model	Engines Only (kWb)	
	60Hz		50Hz			60Hz	50Hz
	Continuous	Standby	Continuous	Standby		Continuous	Continuous
275GL*+	900 rpm	900 rpm	1000 rpm	1000 rpm		900 rpm	1000 rpm
16V 275GL+	3215 ⁶	3215 ⁶	3605 ⁶	3605 ⁶	16V 275GL+	3356 ⁶	3729 ⁶
12V 275GL+	2415 ⁶	2415 ⁶	2705 ⁶	2705 ⁶	12V 275GL+	2517 ⁶	2796 ⁶

I.C. Water Temp. (Tcra) 130°F 54°C

	Remote Radiator Cooling (kWe)				Model	Engines Only (kWb)	
	60Hz		50Hz			60Hz	50Hz
	Continuous	Standby	Continuous	Standby		Continuous	Continuous
VHP*	1200 rpm	1200 rpm	1000 rpm	1000 rpm		1200 rpm	1000 rpm
VHP9504GSI	1600	1600	1460	1460	P9394GSI	1678	1531
VHP9500GSI	1400	1750	1175	1450	P9390GSI	1469	1224
VHP9500GL	1400	1540	1175	1295	P9390GL	1469	1224
VHP7104GSI/GSID	1200	1200	1100 ⁷	1100	L7044GSI	1253	1153 ⁷
VHP7100GSI/GSID S4	1050	1050	875	875	L7042GSI S4	1104	920
VHP7100GL	1050	1155	875	965	L7042GL	1104	919
VHP5904LT/LTD	1025	1025	900 ⁷	900	L5794LT	1078	947 ⁷
VHP5904GSI/GSID	980	980	900 ⁷	900	L5794GSI	1029	947 ⁷
VHP3604GSI/GSID	600	600	540 ⁷	540	F3524GSI	627	573 ⁷

	Remote Radiator Cooling (kWe)				Model	Engines Only (kWb)	
	60Hz		50Hz			60Hz	50Hz
	Continuous	Standby	Continuous	Standby		Continuous	Continuous
VGf*	1800 rpm	1800 rpm	1500 rpm	1500 rpm		1800 rpm	1500 rpm
VGf48GL/GLD	830 ³	860	685 ³	715	P48GL	880 ³	730 ³
VGf48GSI/GSID	750	825	625	685	P48GSI/GSID	800	660
VGf36GL	620 ^{3,9}	645 ⁹	515 ^{3,9}	535 ⁹	L36GL	660 ^{3,9}	550 ^{3,9}
VGf36GLD	620 ³	645	515 ³	535	L36GLD	660 ³	550 ³
VGf36GSI/GSID	560	620	475	515	L36GSI/GSID	600	500
VGf24GL	415 ^{3,9}	425 ⁹	340 ^{3,9}	355 ⁹	H24GL	440 ^{3,9}	365 ^{3,9}
VGf24GLD	415 ³	425	340 ³	355	H24GLD	440 ³	365 ³
VGf24GSI/GSID	375	410	310	340	H24GSI/GSID	400	330
VGf18GL	310 ^{3,9}	315 ⁹	250 ^{3,9}	260 ⁹	F18GL	330 ^{3,9}	275 ^{3,9}
VGf18GLD	310 ³	315	250 ³	260	F18GLD	330 ³	275 ³
VGf18GSI/GSID	280	310	230	255	F18GSI/GSID	300	250

Power Generation

Radiator Cooling, Unit Mounted

	60Hz		50Hz	
	Continuous (kWe)	Standby (kWe)	Continuous (kWe)	Standby (kWe)
VHP*	1200 rpm	1200 rpm	1000 rpm	1000 rpm
VHP7104GSI/GSID	1150 ¹	1150 ¹	1050 ^{1,7}	1050 ¹
VHP7100GSI/GSID S4	1000 ¹	1000 ¹	835 ^{1,7}	835 ¹
VHP7100GL	1025	1130	845	930
VHP5904LT	990	990	860 ⁷	860
VHP5904LTD	990	990	860 ^{1,7}	860 ¹
VHP5904GSI/GSID	940 ¹	940 ¹	860 ^{1,7}	860 ¹
VHP3604GSI/GSID	560 ¹	560 ¹	500 ^{1,7}	500 ¹

	60Hz		50Hz	
	Continuous (kWe)	Standby (kWe)	Continuous (kWe)	Standby (kWe)
VGf*	1800 rpm	1800 rpm	1500 rpm	1500 rpm
VGf48GL/GLD	810 ³	825	670 ³	700
VGf48GSID	730	800	610	650
VGf36GL/GLD	590 ^{3,9}	625 ⁹	500 ^{3,9}	525 ⁹
VGf36GSID	530	600	450	490
VGf24GL/GLD	390 ^{3,9}	405 ⁹	325 ^{3,9}	350 ⁹
VGf24GSID	350	395	295	325
VGf18GL/GLD	295 ^{3,9}	300 ⁹	240 ^{3,9}	250 ⁹
VGf18GSID	265	300	220	240

mobileFLEX

Natural Gas Fueled Engine & Enginotor, Continuous Duty

Mobile Power Generation, **60 Hz**, EPA Certified
(Tier 2 Certified Per 40 CFR 1048)

	Remote Radiator Cooling (kWe)	Engines Only (kWb)
VHP Enginotor	1200 rpm	1200 rpm
VHP5904GSI-EPA	980	L5794GSI-EPA 1029
VHP7104GSI-EPA	1200	L7044GSI-EPA 1253

Mobile Power Generation, **50 Hz**
50 Hz Engines are not EPA Certified (Non-North America Only)

	Remote Radiator Cooling (kWe)	Engines Only (kWb)
VHP Enginotor	1000 rpm	1000 rpm
VHP5904GSI-MOB	900 ⁷	L5794GSI-MOB 947 ⁷
VHP7104GSI-MOB	1100 ⁷	L7044GSI-MOB 1153 ⁷

1) Engine available with Low Fuel Pressure System (LFPS) with the same ratings. Refer to technical data for LFPS ambient and altitude adjustments.

3) These power ratings require pricebook option Code 1100 (176 BMEP). They are available continuously when applied per WKI Power and Timing Curve S7079-19. It is permissible to operate at up to 5% overload for two hours in each 24 hour period.

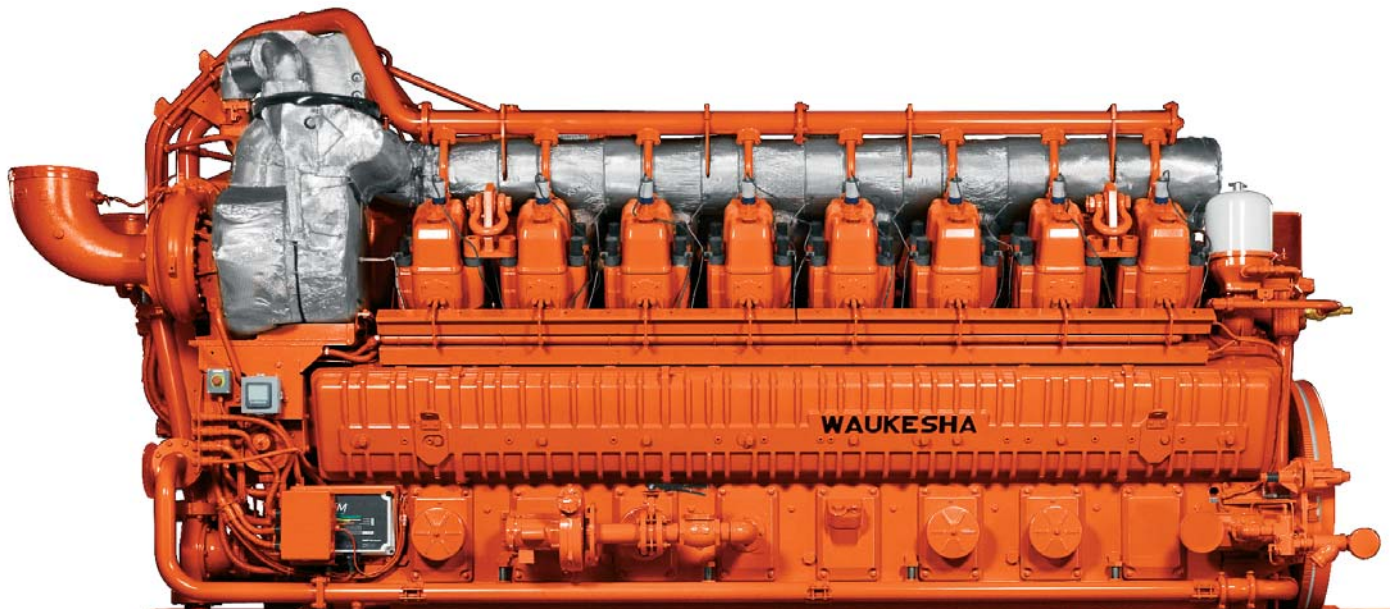
6) Requires corresponding 1080 option code, no overload allowed

7) No overload allowed.

9) Rating is for high compression ratio pistons only.

Generator Standby Power Rating (kWe): This rating applies to those systems used as a secondary source of electrical power. This rating is the output the system will produce continuously (no overload), 24 hours per day for the duration of the prime power source outage.

Notes: kWe output is based on 0.8 Power Factor Enginotor efficiency.



Alternative Fuels

Continuous Duty

Biogas - Landfill - Digester

VHP*				1000 rpm			1200 rpm		
Model	Disp.	Bore & Stroke	C.R.	bhp	kWb	kWe*	bhp	kWb	kWe*
L5794LT	5788 in ³ (94.9 L)	8.5 x 8.5" (216 x 216 mm)	10.2:1	1270 ^{1,7}	947 ^{1,7}	900 ^{1,7}	1445 ¹	1078 ¹	1025 ¹

VGf*				1500 rpm			1800 rpm		
Model	Disp.	Bore & Stroke	C.R.	bhp	kWb	kWe*	bhp	kWb	kWe*
P48GLD	2924 in ³ (48 L)	5.98 x 6.5" (152 x 165 mm)	11:1	885 ¹¹	660 ¹¹	625 ¹¹	1060 ¹¹	800 ¹¹	750 ¹¹
L36GLD	2193 in ³ (36 L)	5.98 x 6.5" (152 x 165 mm)	11:1	670 ¹¹	500 ¹¹	475 ¹¹	800 ¹¹	600 ¹¹	560 ¹¹
H24GLD	1462 in ³ (24 L)	5.98 x 6.5" (152 x 165 mm)	11:1	445 ¹¹	330 ¹¹	310 ¹¹	530 ¹¹	400 ¹¹	375 ¹¹
F18GLD	1096 in ³ (18 L)	5.98 x 6.5" (152 x 165 mm)	11:1	335 ¹¹	250 ¹¹	230 ¹¹	400 ¹¹	300 ¹¹	280 ¹¹

1) Engine available with Low Fuel Pressure System (LFPS) with the same ratings. Refer to technical data for LFPS ambient and altitude adjustments.

7) No overload allowed.

11) Engine operation using 400 - 500 Btu/ft³ (15.7 - 19.7 MJ/m³). Landfill fuel requires 175°F (80°C) ICW. Option code 1100 is not available.

Notes:

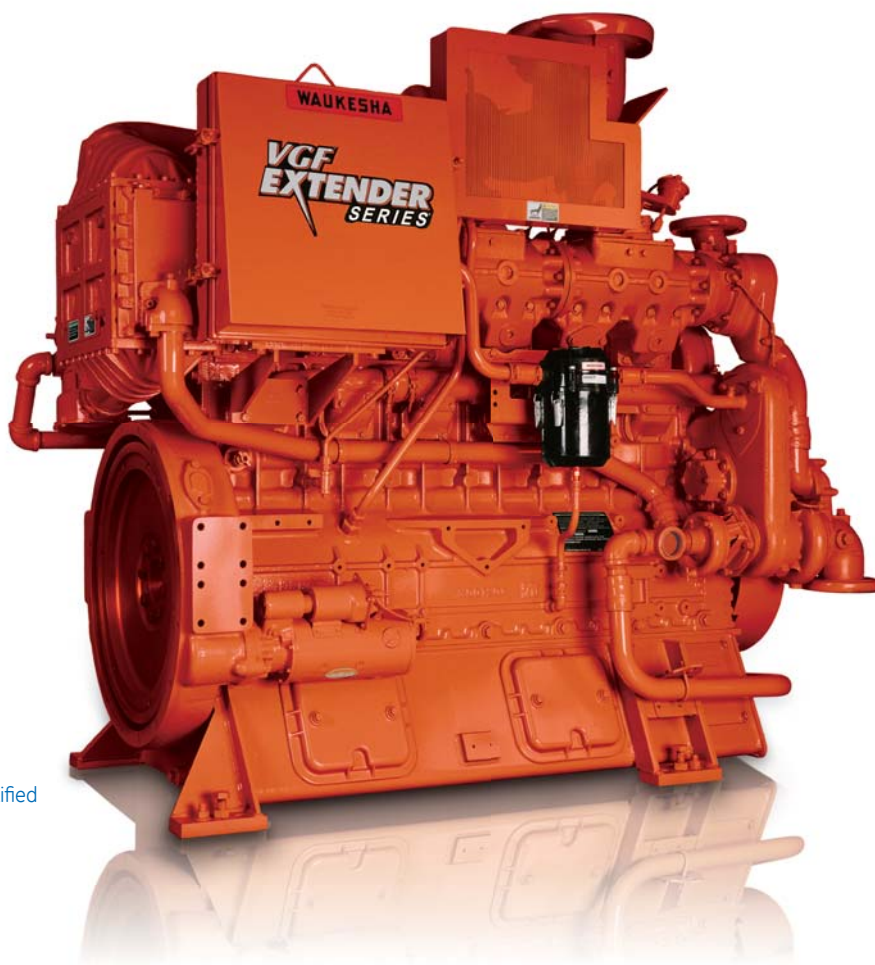
- Low Btu (caloric value) fueled engines operate on fuel with 400 Btu/ft³ (15.7 MJ/m³) or greater saturated low heat (net calorific value) and are equipped with special low Btu fuel system.
- VGf GLD - Gas lean combustion with draw-thru carburetion. Minimum regulated gas supply pressure is 8" H2O (12.44 mbar)
- Generator efficiencies are typical values. Please consult with your packager.
- All ratings are at an intercooler water temperature of 130°F (54.4°C).

Waukesha Engine Model Prefix Designations

Number of cylinders except 275GL which states actual number of cylinders.
P = 16 H = 8 L = 12 F = 6

Suffix Designations

- G = Naturally aspirated
- GSI = Turbocharged intercooled
- GSID = Turbocharged intercooled draw-thru
- GL = Turbocharged intercooled lean burn
- LT = Lean combustion turbulence
- GLD = Turbocharged intercooled lean burn draw-thru
- LTD = Lean combustion turbulence draw-thru
- EPA = United States Environmental Protection Agency (EPA) certified
- MOB = Mobile, non-certified, Non-North America



HD-5 Propane Fueled Engines

Continuous Duty

275GL*+

Model	Disp.	Bore & Stroke	C.R.	900 rpm		1000 rpm	
				bhp	kWb	bhp	kWb
16V 275GL+	17,398 in ³ (285 L)	10.83 x 11.81" (275 x 300 mm)	9:1	2966	2212	3295	2457
12V 275GL+	13,048 in ³ (213.9 L)	10.83 x 11.81" (275 x 300 mm)	9:1	2224	1658	2471	1843

VHP*

Model	Disp.	Bore & Stroke	C.R.	900 rpm		1000 rpm		1200 rpm	
				bhp	kWb	bhp	kWb	bhp	kWb
P9394GSI	9388 in ³ (153.9 L)	9.375 x 8.5" (238 x 216 mm)	9.7:1	1388	1035	1542	1150	1850	1380
P9390GSI			8:1	1162	867	1244	928	1379	1029
P9390GL			10.5:1	1184	883	1315	981	1578	1177
L7044GSI	7040 in ³ (115.4 L)	9.375 x 8.5" (238 x 216 mm)	8:1	864	644	960	716	1152	859
L7042GSI S4			8:1	864	644	960	716	1152	859
L7042GL			10.5:1	888	662	987	736	1184	883
L5794GSI	5788 in ³ (94.9 L)	8.5 x 8.5" (216 x 216 mm)	8.2:1	789	588	877	654	1052	785
F3524GSI	3520 in ³ (57.7 L)	9.375 x 8.5" (238 x 216 mm)	8:1	472	352	524	391	629	469

VGf*

Model	Disp.	Bore & Stroke	C.R.	1500 rpm		1800 rpm	
				bhp	kWb	bhp	kWb
P48GSID	2924 in ³ (48 L)	5.98 x 6.5" (152 x 165 mm)	8.6:1	609	454	731	545
P48GL/GLD			11:1	496	370	604	450
L36GSID	2193 in ³ (36 L)	5.98 x 6.5" (152 x 165 mm)	8.6:1	457	341	548	409
L36GL/GLD			11:1	376	280	442	330
L36GL			8.7:1	670 ¹⁹	500 ¹⁹	800 ¹⁹	600 ¹⁹
H24GSID	1462 in ³ (24 L)	5.98 x 6.5" (152 x 165 mm)	8.6:1	305	227	366	273
H24GL/GLD			11:1	249	186	299	223
H24GL			8.7:1	445 ¹⁹	330 ¹⁹	530 ¹⁹	400 ¹⁹
H24G			11:1	249	186	299	223
F18GSID	1096 in ³ (18 L)	5.98 x 6.5" (152 x 165 mm)	8.6:1	228	170	274	204
F18GL/GLD			11:1	187	139	224	167
F18GL			8.7:1	335 ¹⁹	250 ¹⁹	400 ¹⁹	300 ¹⁹
F18G			11:1	187	139	224	167

19) Contact Application Engineering regarding stability in Power Generation applications

Notes:

- No overload allowed on all HD-5 propane ratings.
- Requires a minimum of 34 WKI fuel.
- Engine may require optional fuel system.
- All ratings are at an intercooler water temperature of 130°F (54.4°C).

Rating Standard: All models: Ratings conform to ISO 3046/1 (latest version) with a mechanical efficiency of 90% and auxiliary water temperature, Tcr, as specified in the Power Rating Chart, Bulletin 1079 (latest version) limited to ±10° F (±5.5° C). Ratings are also valid for SAE J1349, BS 5514, DIN 6271 and API 7B-11C standard atmospheric reference conditions.

Fuel Standard: All natural gas engine ratings are based on 900 BTU/ft³ [35.38 MJ/m³ [25, V(0; 101.325)]] SLHV, 91 WKI minimum, commercial quality natural gas. Refer to S-7884-7 (latest version) for full gaseous fuel specifications.

ISO Standard Power (Continuous Power Rating): The highest load and speed that can be applied 24 hours per day, seven days per week, 365 days per year except for normal maintenance at ISO standard ambient reference conditions. Unless otherwise stated, at ISO standard ambient reference conditions, it is permissible to operate the engine at up to 110% of the ISO Standard Power or the maximum power indicated by the intermittent rating, whichever is lower, for two hours in every 24 hour period.

ISO Service Power (Site Continuous Power Rating): The highest load and speed that can be applied 24 hours per day, seven days per week, 365 days per year except for normal maintenance at the operating and ambient conditions of the site application. Unless otherwise stated, it is permissible to operate the engine at up to 110% of the ISO Service Power (see the Overload Power definition) or the intermittent power rating available at the site operating and ambient conditions, whichever is lower, for two hours in every 24 hour period.

Overload Power: The power that an engine is permitted to supply, with a duration and frequency of use depending upon the service application, at stated ambient conditions, immediately after operating at its ISO Service Power rating. Unless otherwise stated, it is permissible to operate the engine at up to 110% of the ISO Service Power or the intermittent power rating available at the site operating and ambient conditions, whichever is lower, for two hours in every 24 hour period. For situations without a defined intermittent power, the allowable 10% overload power is reduced from ISO standard ambient reference conditions by the applicable rating adjustments listed in the Intermittent/Standby Power column.

Intermittent Power Rating: The highest load and speed that can be applied in variable speed mechanical system applications only. Operation at this rating is limited to a maximum of 3500 hours per year.

Generator Continuous Power Rating (kW): The highest load and speed which can be applied 24 hours per day, seven days per week, 365 days per year except for normal maintenance. Unless otherwise stated, it is permissible to operate the engine at up to 110% of the generator continuous power rating for two hours in every 24 hour period.

Generator Standby Power Rating (kW): This rating applies to those systems used as a secondary source of electrical power. This rating is the output the system will produce continuously 24 hours per day for the duration of the prime power source outage. No overload is allowed. This rating may reduce the lifecycle intervals.



www.ge-distributedpower.com

GE Power's Distributed Power business is a leading provider of engines, power equipment and services focused on generating power at or near the point of use. Distributed Power offers a diverse product portfolio that includes highly efficient, fuel-flexible, industrial gas engines generating 100 kW to 10 MW of power for numerous industries globally. In addition, the business provides life cycle support for more than 35,000 gas engines worldwide to help you meet your business challenges and success metrics – anywhere and anytime. Backed by our authorized service providers in more than 170 countries, GE's global service network connects with you locally for rapid response to your service needs.

GE's Distributed Power business is headquartered in Jenbach, Austria.

More information on GE's Distributed Power technology:

Austria

Achenseestraße 1-3
6200 Jenbach, Austria

China

No.1 Hua Tuo Rd.
Zhang Jiang Hi-Tech Park
Shanghai 201203, China

Denmark

Samsøvej 10
8382 Hinnerup, Denmark

Germany

Carl-Benz-Str. 25
67227 Frankenthal, Germany

Italy

Via Staffoli 1
37062 Dossobuono, Italy

Kenya

The Courtyard
General Mathenge
Drive Westlands
Nairobi, Kenya

Peru

Av. Las Begonias 415
Piso 14, San Isidro Lima 27, Peru

Russia

Presnenskaya Naberezhnaya 10
123317 Moscow

Saudi Arabia

5th Floor Tatweer Towers
Building No. 3&4
King Fahad Road
Riyadh SA 11433, Saudi Arabia

Spain

Calle Josefa Valcarcel 26
Building Merrimack III
28027 Madrid, Spain

The Netherlands

Kelvinring 58
2952 BG Alblasterdam, The Netherlands

USA

Westway Plaza
11330 Clay Road
Houston, TX 77041, USA

1101 West St. Paul Avenue
Waukesha, WI 53188-4999, USA

Imagination at work

